

# WINDOW ALERT ALARM - 2 PACK

Shock Sensor Alarm for Windows

Product Code: EL00174

## Introduction

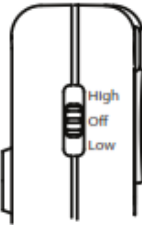
The Defender Window Alert Alarm is a convenient, easy to use alarm designed to increase the safety of your home. The alarm is intended to provide both a visible deterrent by the use of an adhesive warning sticker and an audible deterrent should there be an attempted forced entry.



## Operation of the alarm

Please note: Remove the battery tab before first use.

1. Using the double sided adhesive sticker mount the Defender Window Alert Alarm on the glass of the window (or door) to be protected. Ensure the surface is clean, dry and flat.
2. To arm the unit, position the switch located at the side of the unit to 'High' or 'Low' sensitivity, as preferred. There will be a 5-7 second delay before the unit is armed.



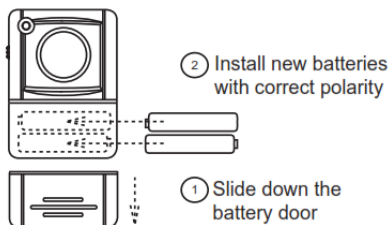
3. Once set, the siren will be activated if the glass or door is hit or knocked. The siren will sound 45-48 seconds and will then automatically reset after 3-5 seconds. The next time the alarm is activated, the siren will sound for 25-35 seconds.
4. Each time the unit is reset (i.e. the switch is moved between 'High' and 'Low' sensitivity), there will be a 5-7 second delay before unit is active and will on first activation produce a 45-48 second alarm.
5. To test, gently knock on the window in several places. The Window Alert Alarm will sound.

### Note:

When testing a cloth can be used to cover the alarm siren to reduce the risk of hearing damage.

## Battery test and replacement

It is recommended that the alarm is tested regularly. If the alarm sounds weak, the batteries should be replaced. Each unit operates by 2 x AAA batteries. To replace the batteries, slide off the battery compartment cover (located at the front of the unit). Insert 2 x AAA batteries, noting the polarity diagram inside the battery compartment. Replace the battery compartment cover.



Remove batteries before storing this device for extended periods. Batteries will corrode over time and may cause permanent damage. Depleted batteries should be disposed of properly.

### **WARNING**

The high output siren fitted to this quality personal alarm may cause ear damage if used at close range for a prolonged period of time. Keep away from children and pets ears. This product is designed for use as a deterrent; it does not guarantee protection or personal safety.

### **CAUTION**

- When testing the alarm, make sure you cover the siren.
- The power source or propellant has a finite / limited life.
- DO NOT MODIFY THE ALARM.
- The alarm should be kept out of reach and audible range of children and pets.

### **Note:**

Performance may be adversely affected following prolonged exposure to extreme temperatures.

### **Defender Security Products**

Unit 40  
Manor Industrial Estate  
Flint, Flintshire  
CH6 5UY



**Defender**<sup>®</sup>  
SECURITY PRODUCTS

**Your Safety is Our Expertise**